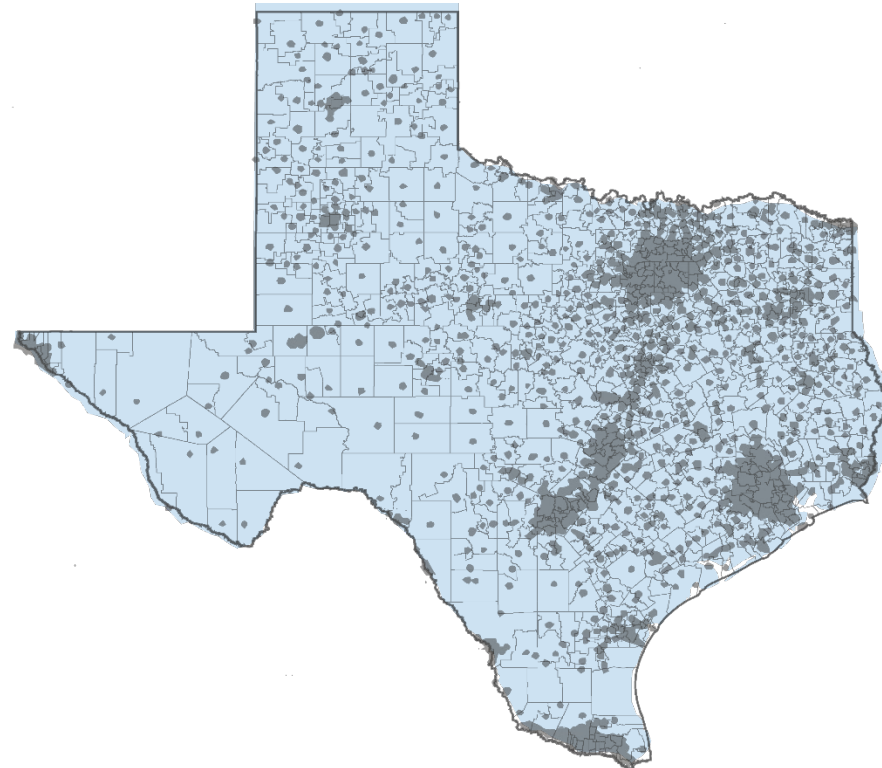


The background of the slide is a photograph of the Texas State Capitol building in Austin. The building is a large, classical-style structure with a prominent central dome topped by a statue. The sky is overcast with grey clouds. In the foreground, there is a well-manicured green hedge and a paved walkway leading towards the building.

# State of Education: The \$2 Trillion Problem

HOUSE PUBLIC EDUCATION COMMITTEE  
4/26/2022

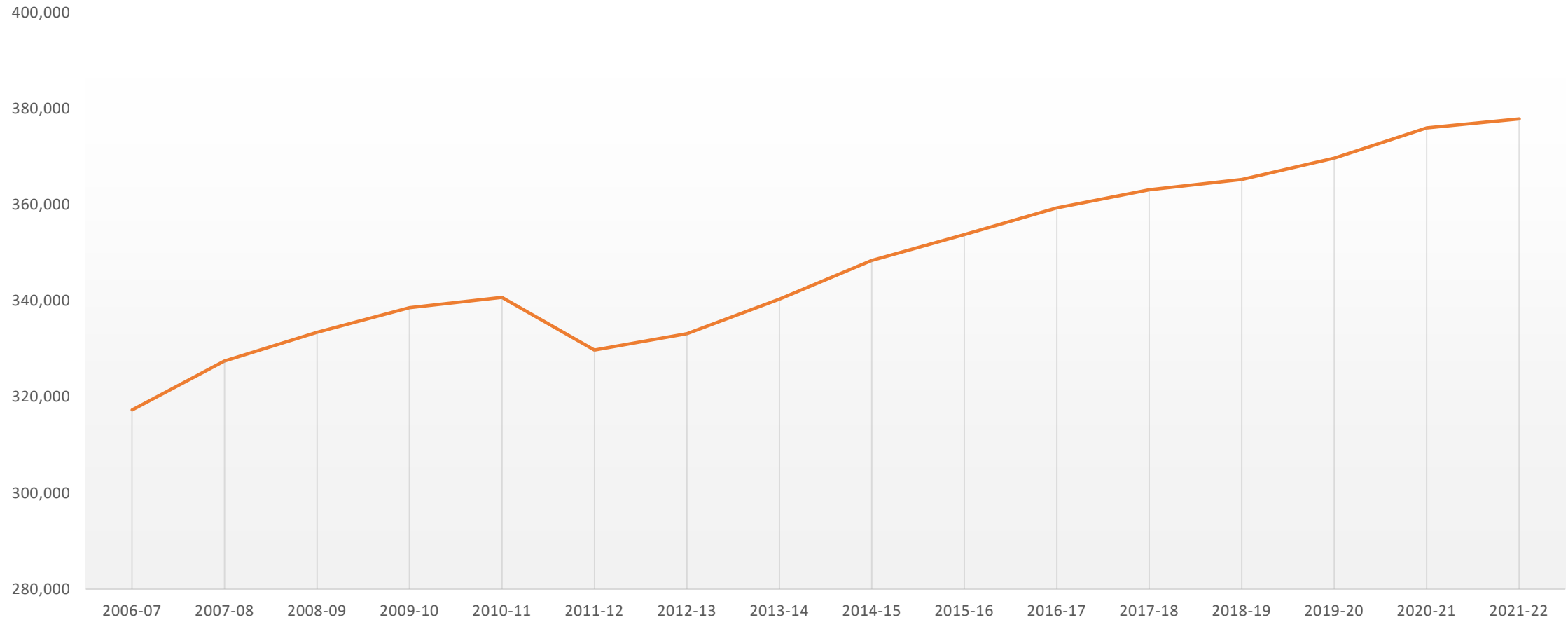
# Public Education in Texas is a Very Large Enterprise





# Public Education in Texas is a Very Large Enterprise Employing More Teachers than Ever

Number of Employed Teachers

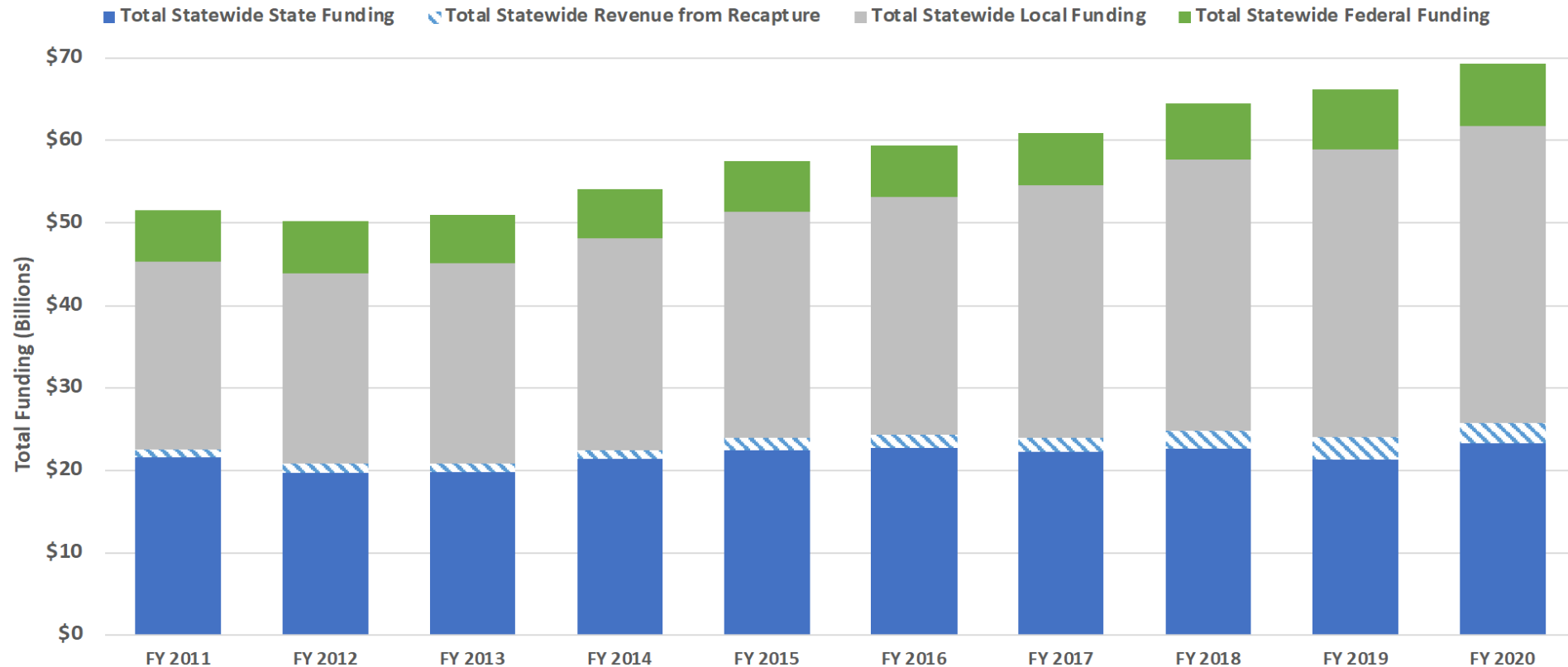




# Public Education in Texas is a Very Large Enterprise With Substantial Levels of Funding

## \$69,280,000

2020 Total Annual Funding



# Our Goals for Children



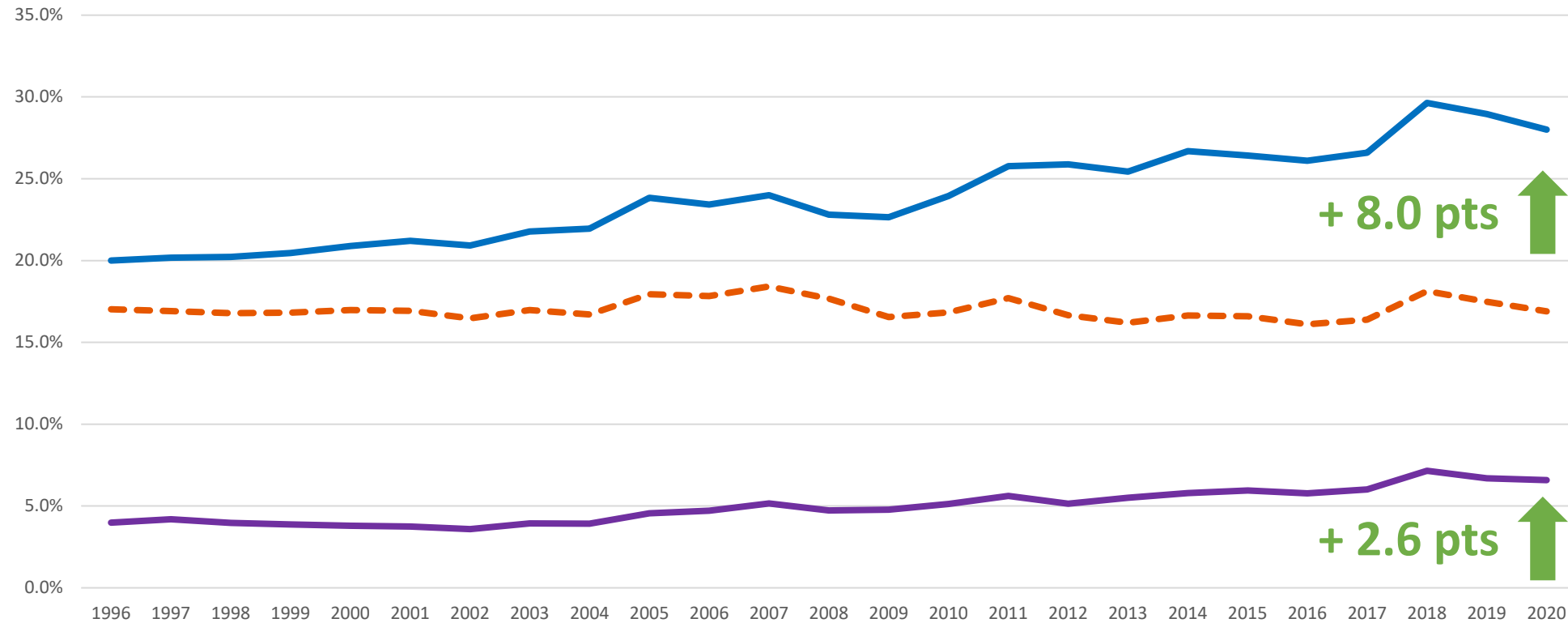
## Our Vision

Every child, prepared for success in college, career, or the military.

# Long Term History of College Readiness

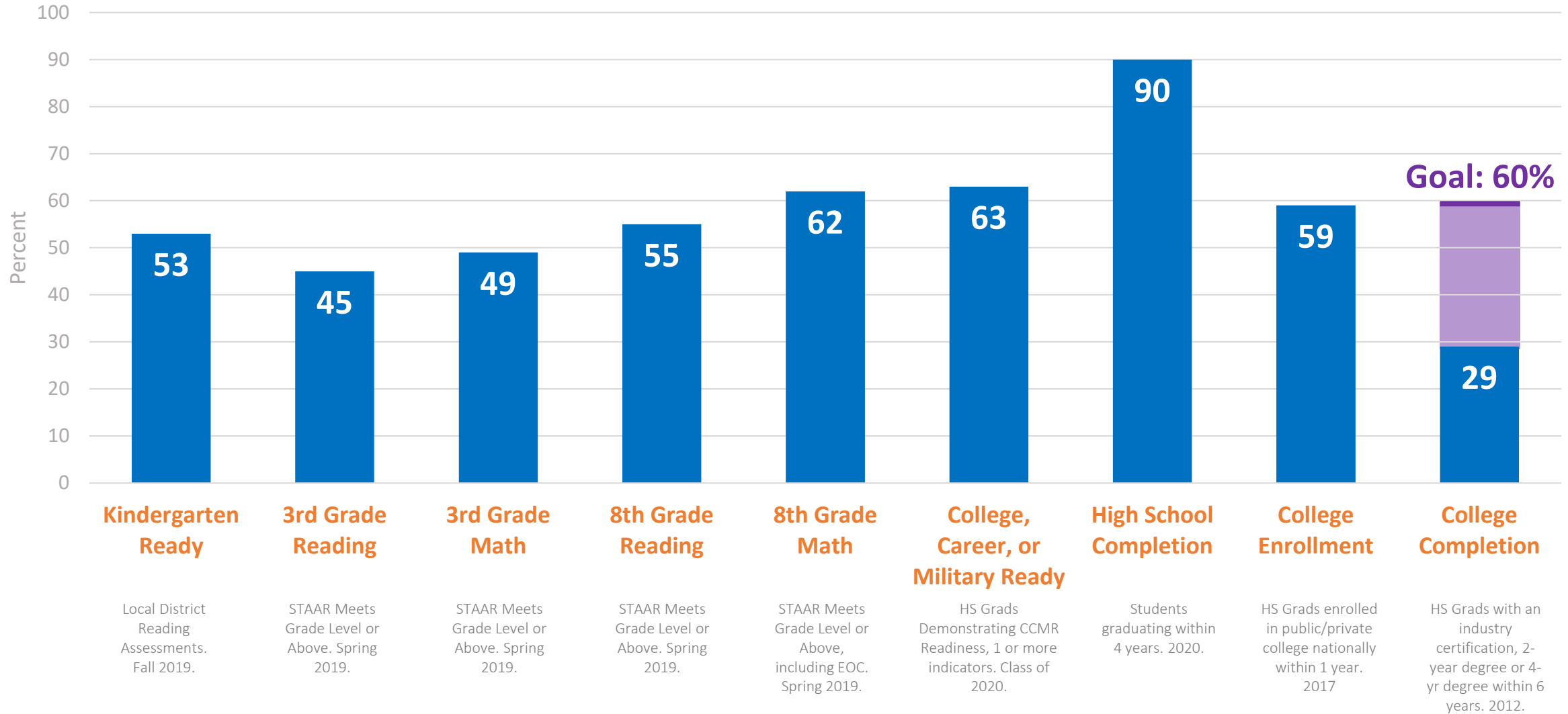
## 1996 - 2020

### % Above "Passing" on SAT/ACT

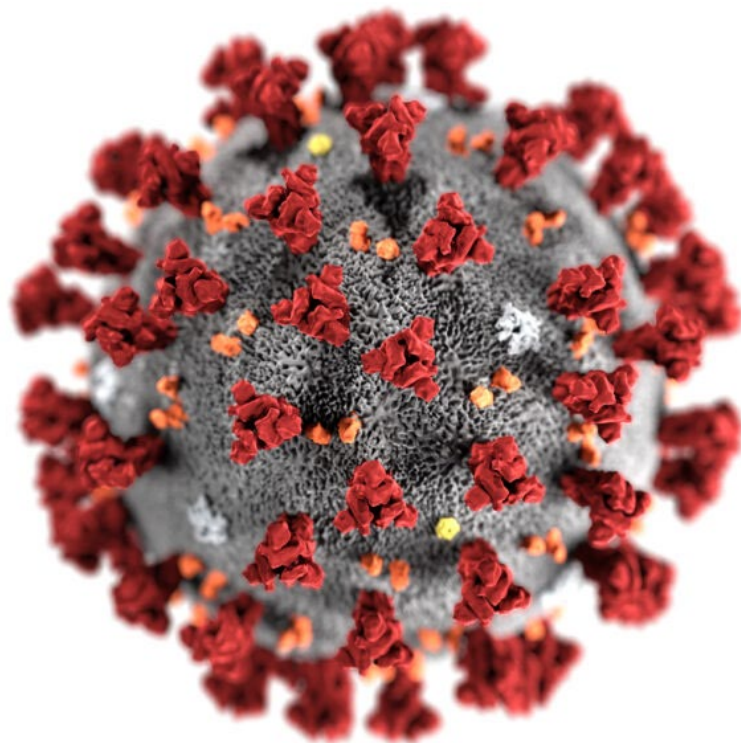


■ All Students     
 ■ Non-Economically Disadvantaged     
 ■ Economically Disadvantaged

# Student Achievement and Attainment Summary Pre-COVID



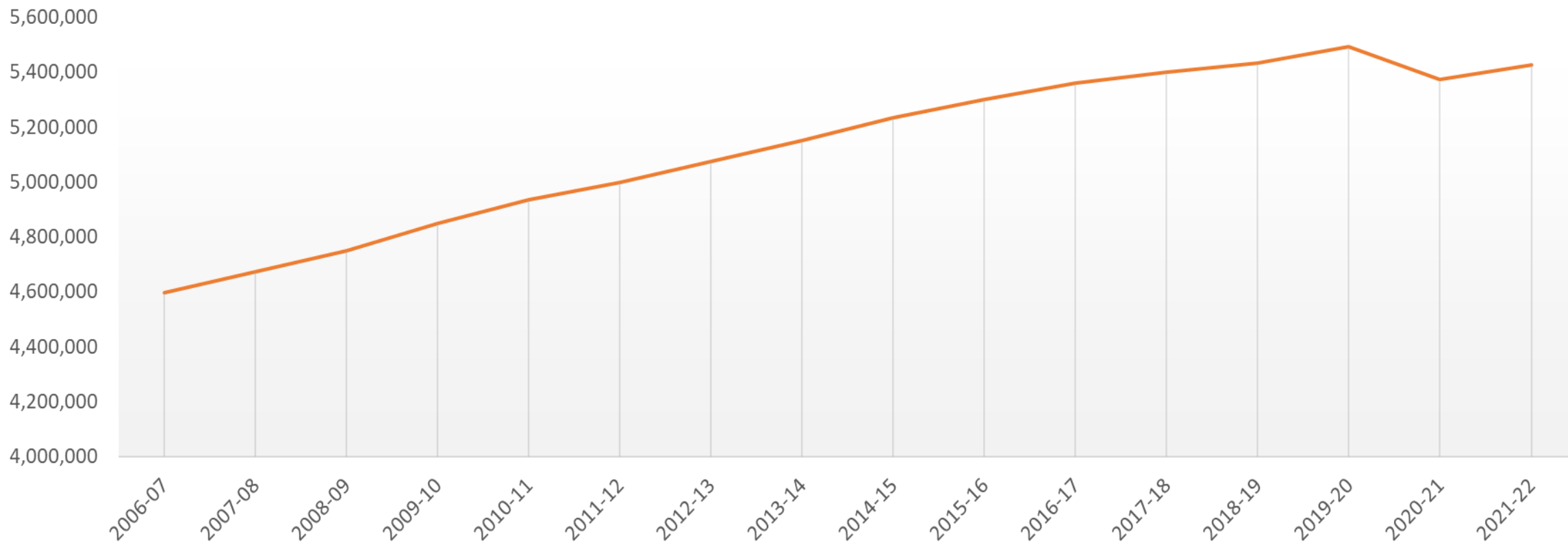
# The COVID-19 Pandemic





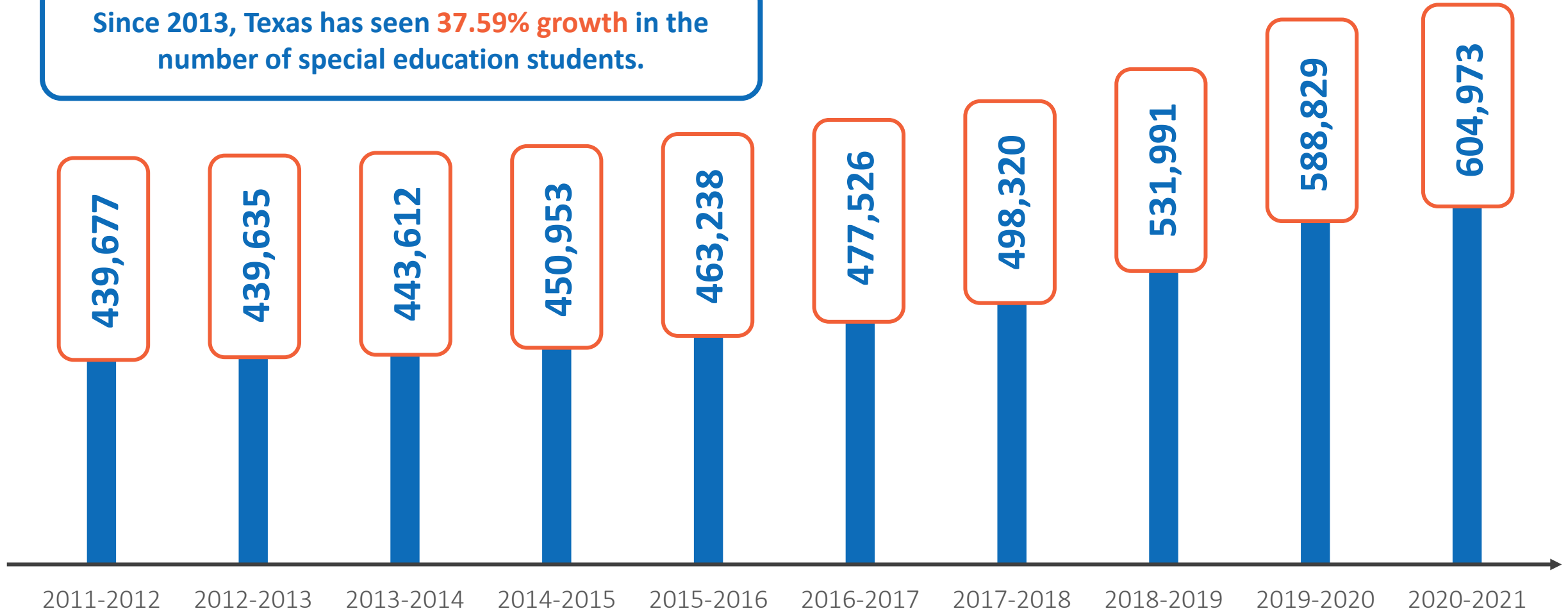
# Statewide student enrollment has declined significantly due to COVID disruptions

### Student Enrollment



# Even with COVID Disruptions in Enrollment, the Number of Special Education Students Served Continues to Increase

Since 2013, Texas has seen **37.59% growth** in the number of special education students.

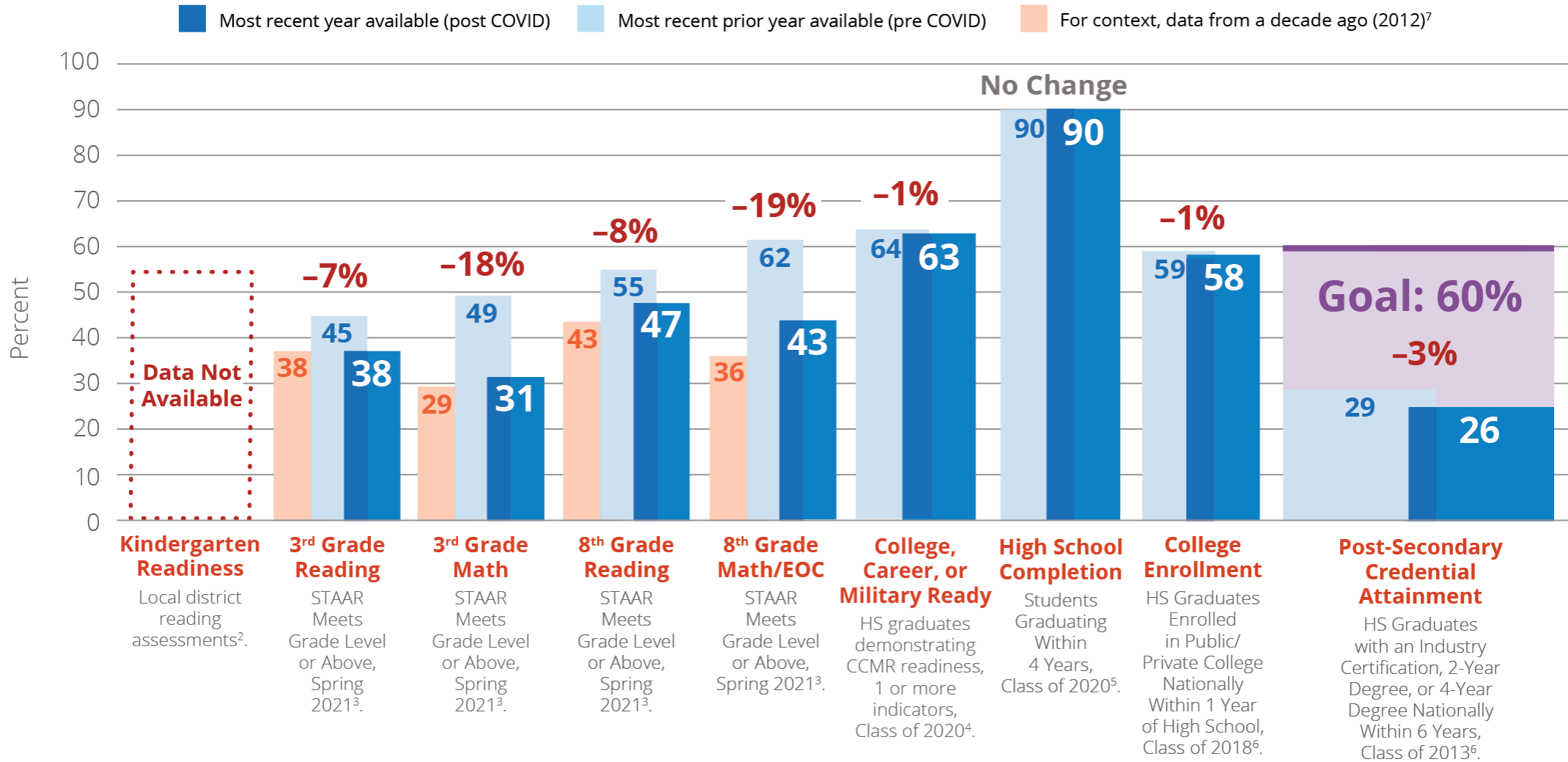


SOURCE: U.S. Department of Education, National Center for Education Statistics. (2016). Digest of Education Statistics, 2015 (NCES 2016-014), [Chapter 2](#). and <http://nces.ed.gov/fastfacts/display.asp?id=64>





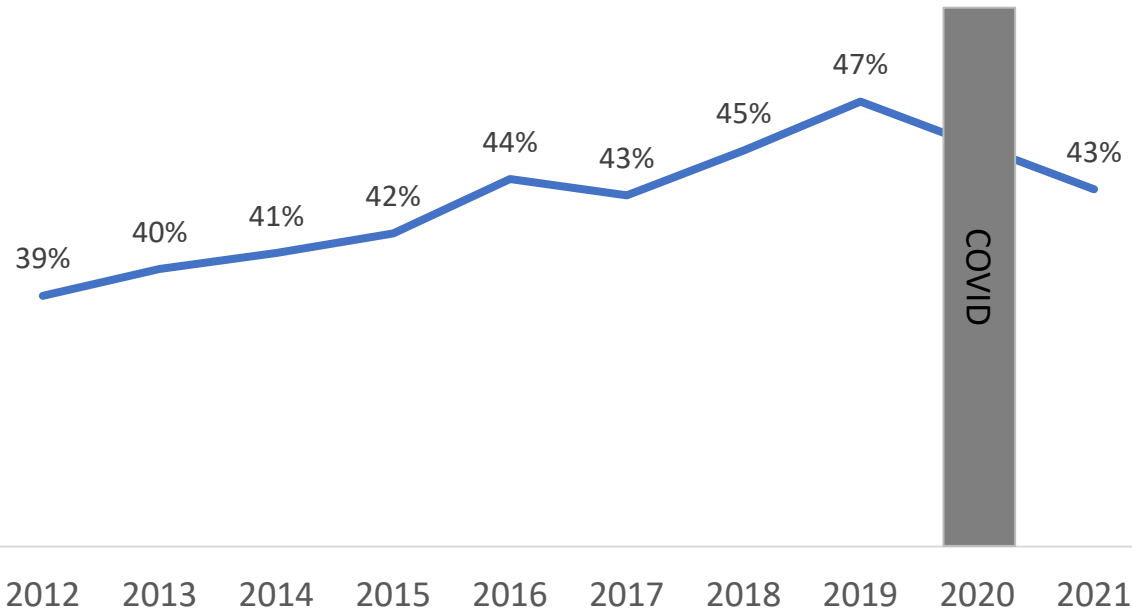
# Student Achievement and Attainment Has Declined Significantly Due to COVID Disruptions



# COVID-19 Erased Years of Academic Gains

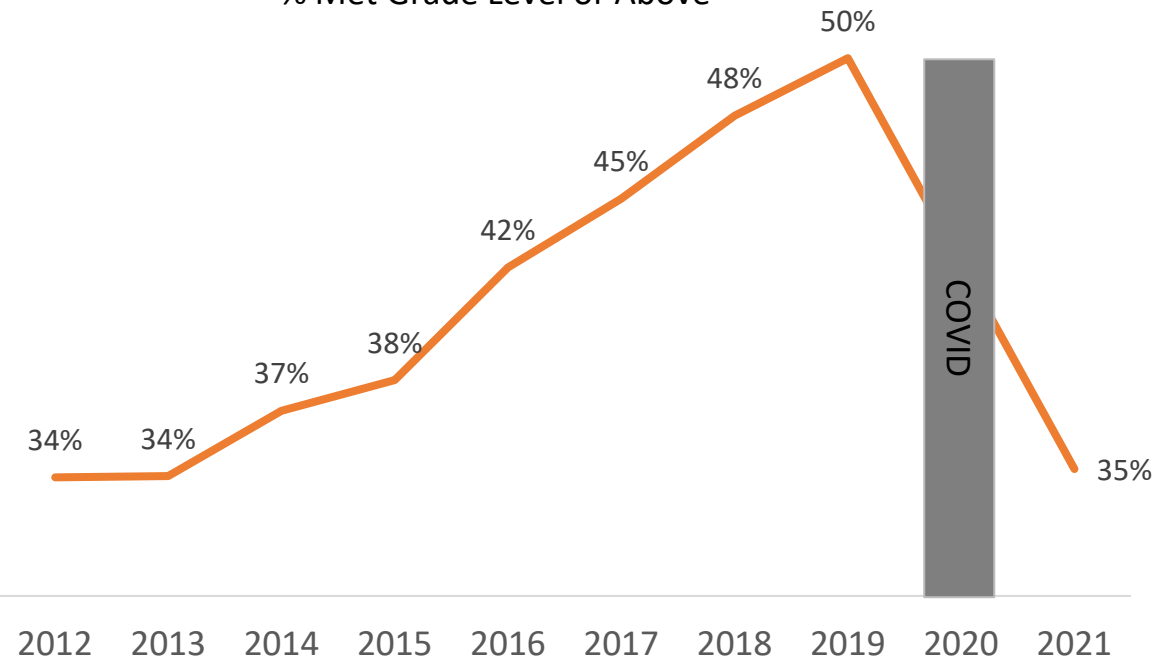
## Reading

% Met Grade Level or Above



## Math

% Met Grade Level or Above



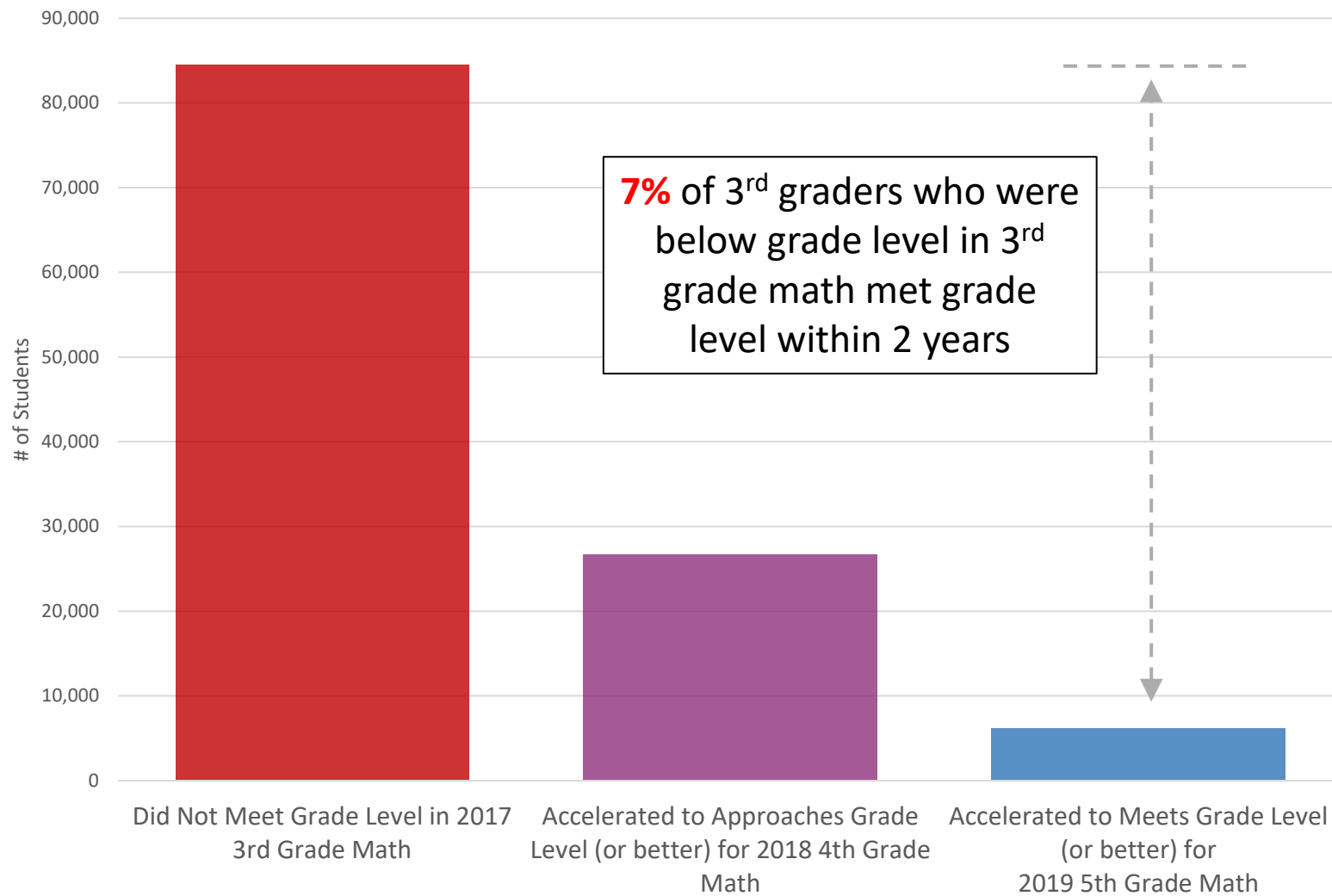
# We Have Had Limited Success Accelerating Students From Below Grade to Meets Grade Level

## Hurricane Katrina



After **4 years** of intervention, those students recovered to state averages in reading. **They did not recover in math.**

Source: TEA



# If We Don't Accelerate Learning, Consequences to Texas Will Be Significant



Student education levels on state assessments have been ***strongly linked*** to lifetime earnings.



With the level of learning lost, estimated lifetime earnings for Texas students will reduce by **more than 6%**.



This translates to a net present value loss from lifetime reduced economic growth for the Texas economy of **\$2 trillion.**

**Unless We Improve Our Ability  
to Accelerate Learning, Now.**

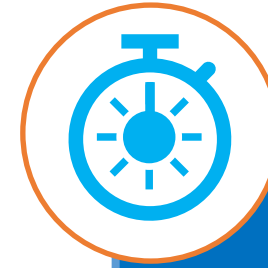
# The Legislature Has Taken Action to Support Learning Acceleration



Rigorous **instructional materials** designed to make up ground



**Supported teachers** who are equipped to deliver excellence



**More time** for the students most in need, including in the summer and with targeted **tutoring**



**HB 1525**

Texas COVID-19 Learning Acceleration Supports



**HB 4545**

Accelerated Instruction & Tutoring





Rigorous  
**instructional  
materials**  
designed to make  
up ground



## Core Instructional Materials

**Printed, high-quality instructional materials** (and digital supports) designed for learning acceleration



## Supplemental Materials

Licenses to supplemental products for **early learners, college prep** and **blended learning models**.



**Supported teachers** who are equipped to deliver excellence

## Supporting Today



### Professional Development

**Design and Implementation support** for educators using high quality instructional materials



### Strategic Staffing

Grant funding for **teacher resident stipends** and access to **strategic staffing design and implementation supports**.

## Preparing For Tomorrow



### Teacher Residencies

**High-quality, sustainable teacher residency** planning and implementation support in partnership with an Educator Preparation Program.



### Grow Your Own

**Grow Your Own** pathways with funding for HS students and paraprofessionals to become teachers.

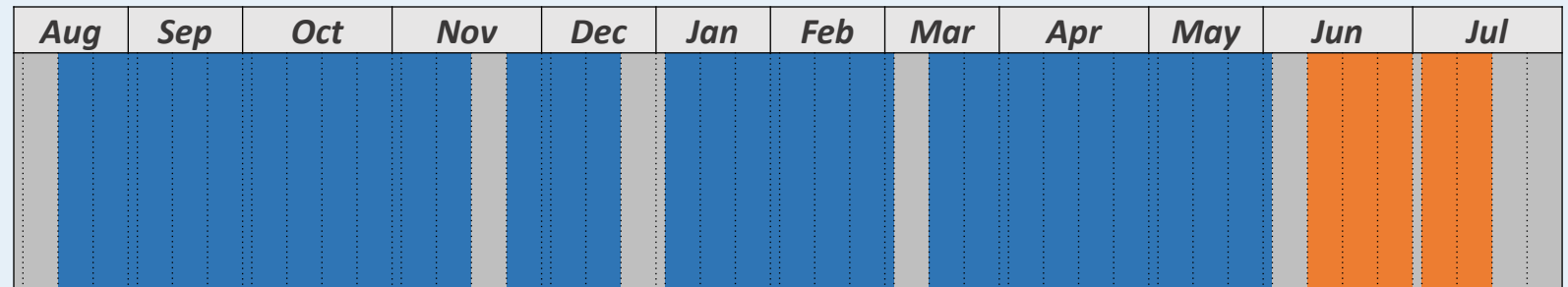


**More time** for the students most in need, including in the summer

## Additional Summer Learning Opportunities

180 Instructional Days

Additional Days





## Targeted tutoring



### Well Trained, Consistent Tutor

Teacher, paraprofessional, teacher candidate who builds a strong relationship with students.



### One-to One Or Small Group

Provides individualized support (1-to-4 maximum ratio recommended).



### High-Quality Materials

All aligned to the Texas state standards and core classwork.



### Embedded

In the school day or immediately before or after, to maximize student access



### Multiple Sessions Per Week

For sustained and continuous support, 30 minutes minimum for each session.

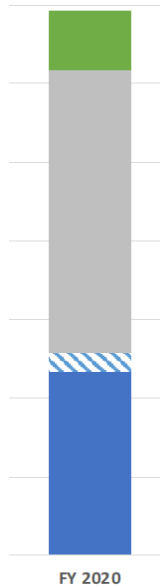


### Data-Driven

With tutors building sessions around student strengths and needs

# More Funds to Support Acceleration

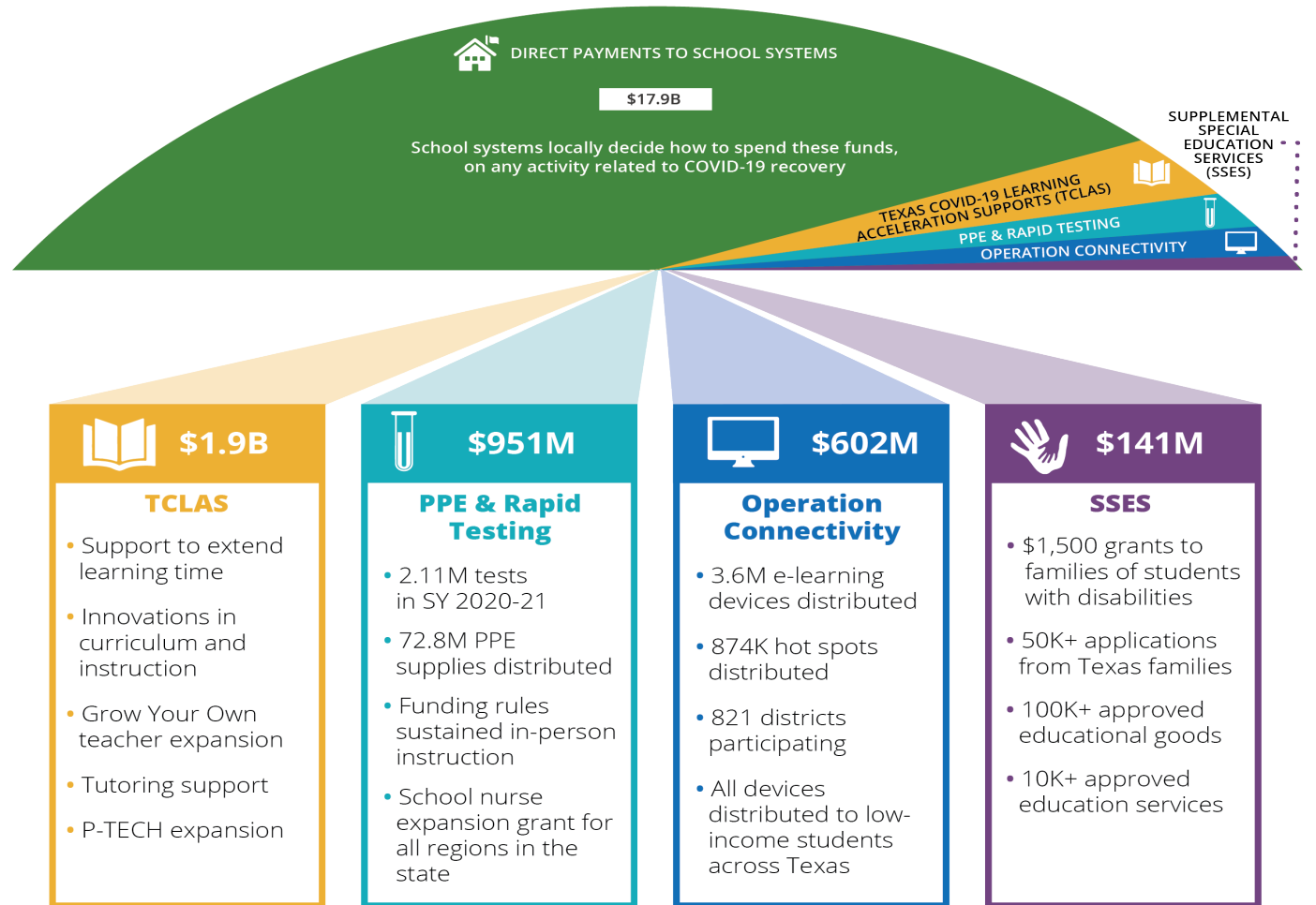
## 2020 Total Annual Funding



**\$69.3 Billion**



## COVID One-Time Relief Funding

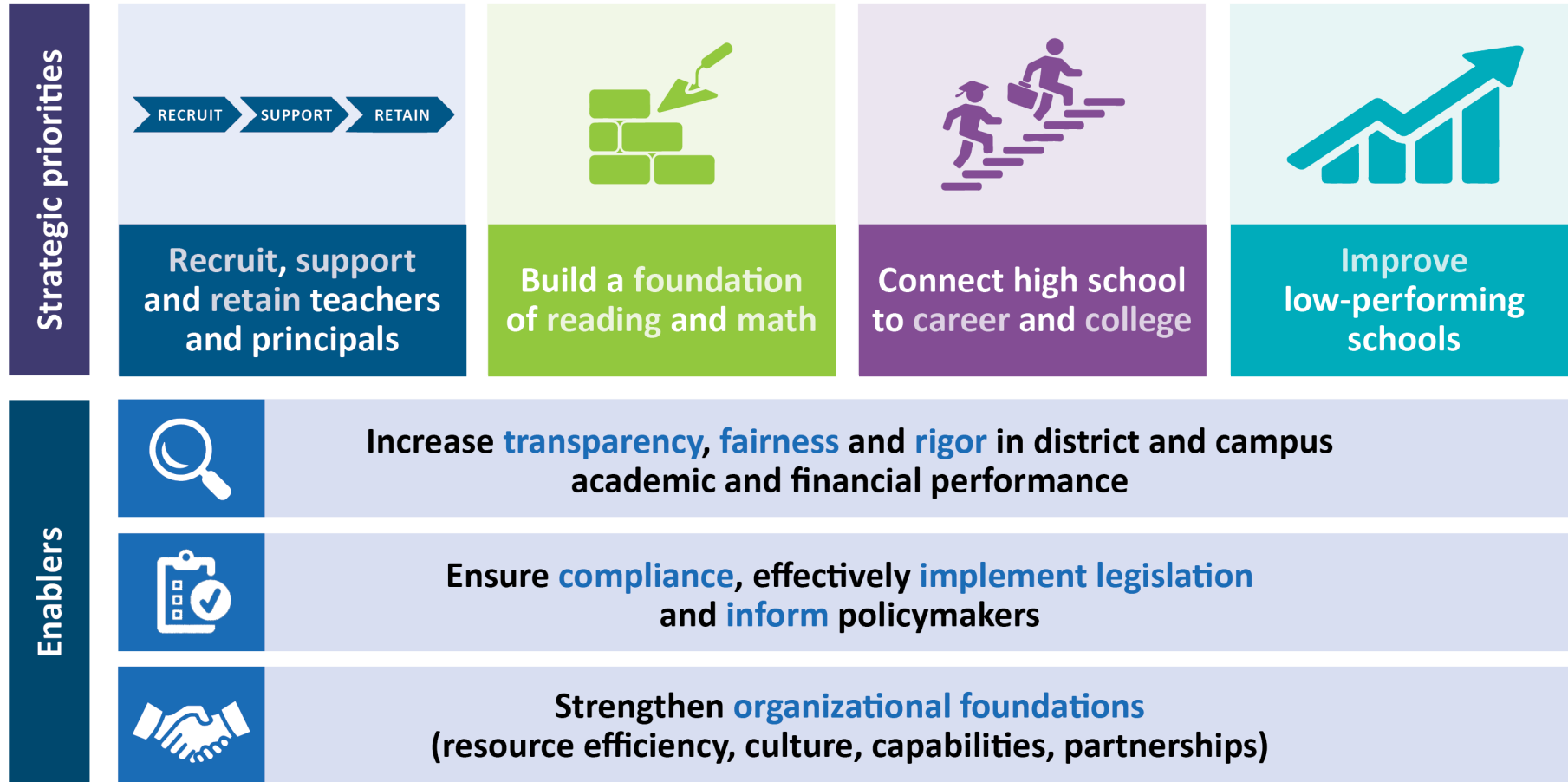


**~\$21.4 Billion**

Numbers as of 12/31/21

# Our Urgent Work to Accelerate Builds on a Strategic Plan and HB 3 from the 2019 Texas Legislative Session

Every child, prepared for success in college, a career or the military.



# TEA Strategic Priorities

Every child, prepared for success in college, a career or the military.


Strategic priorities



**Recruit, support and retain teachers and principals**



**Build a foundation of reading and math**



**Connect high school to career and college**



**Improve low-performing schools**

Enablers



**Increase transparency, fairness and rigor in district and campus academic and financial performance**



**Ensure compliance, effectively implement legislation and inform policymakers**



**Strengthen organizational foundations (resource efficiency, culture, capabilities, partnerships)**



## Master

Base Salary + \$12K-\$32K



## Exemplary

Base Salary + \$6-\$18K



## Recognized

Base Salary + \$3-\$9K

The Teacher Incentive Allotment provides extra funding, from **\$3,000 - \$32,000** per teacher per year, with more money for high needs and rural schools



# More Districts are Offering the Teacher Incentive Allotment

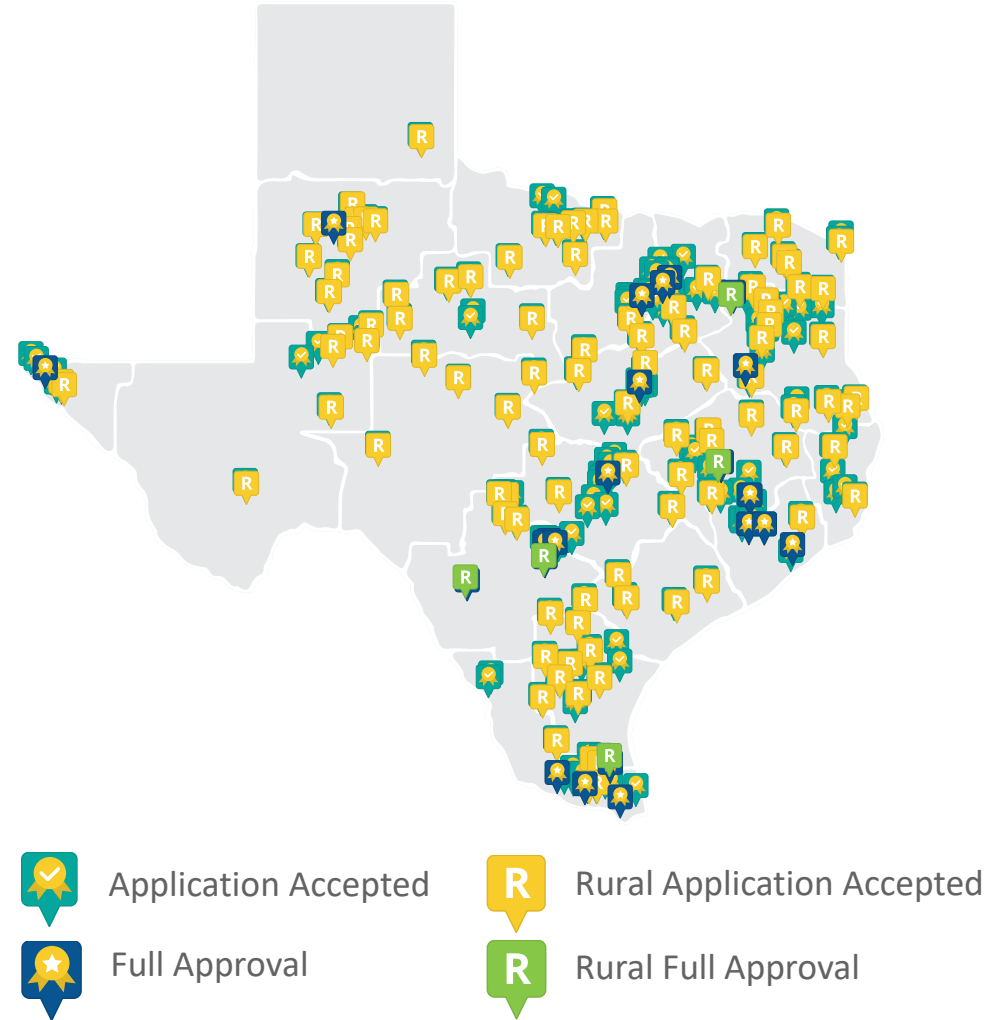
## 2022-2023 Projections

**\$187,227,012**

Total Funding

**14,953**

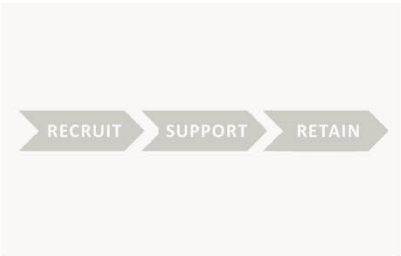
Designated Teachers



# TEA Strategic Priorities

Every child, prepared for success in college, a career or the military.

Strategic priorities



Recruit, support and retain teachers and principals



Build a foundation of reading and math



Connect high school to career and college



Improve low-performing schools

Enablers



Increase transparency, fairness and rigor in district and campus academic and financial performance

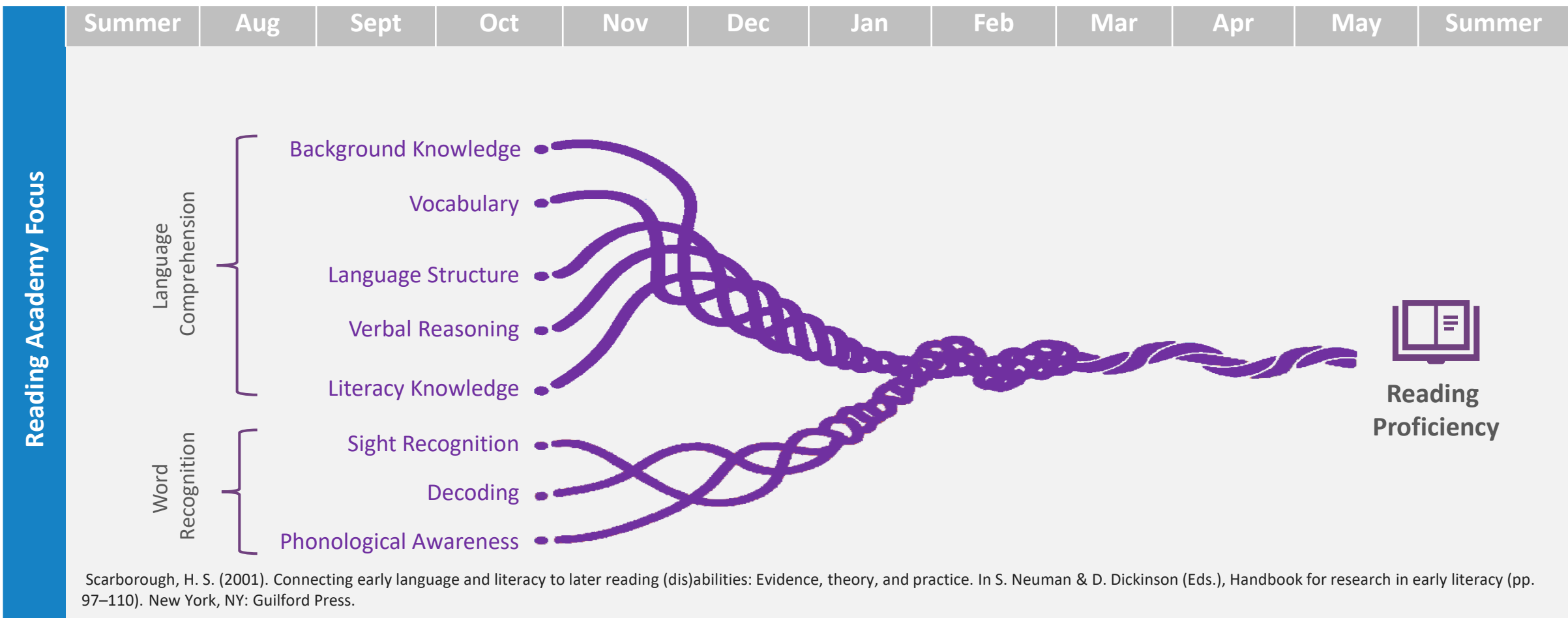


Ensure compliance, effectively implement legislation and inform policymakers



Strengthen organizational foundations (resource efficiency, culture, capabilities, partnerships)

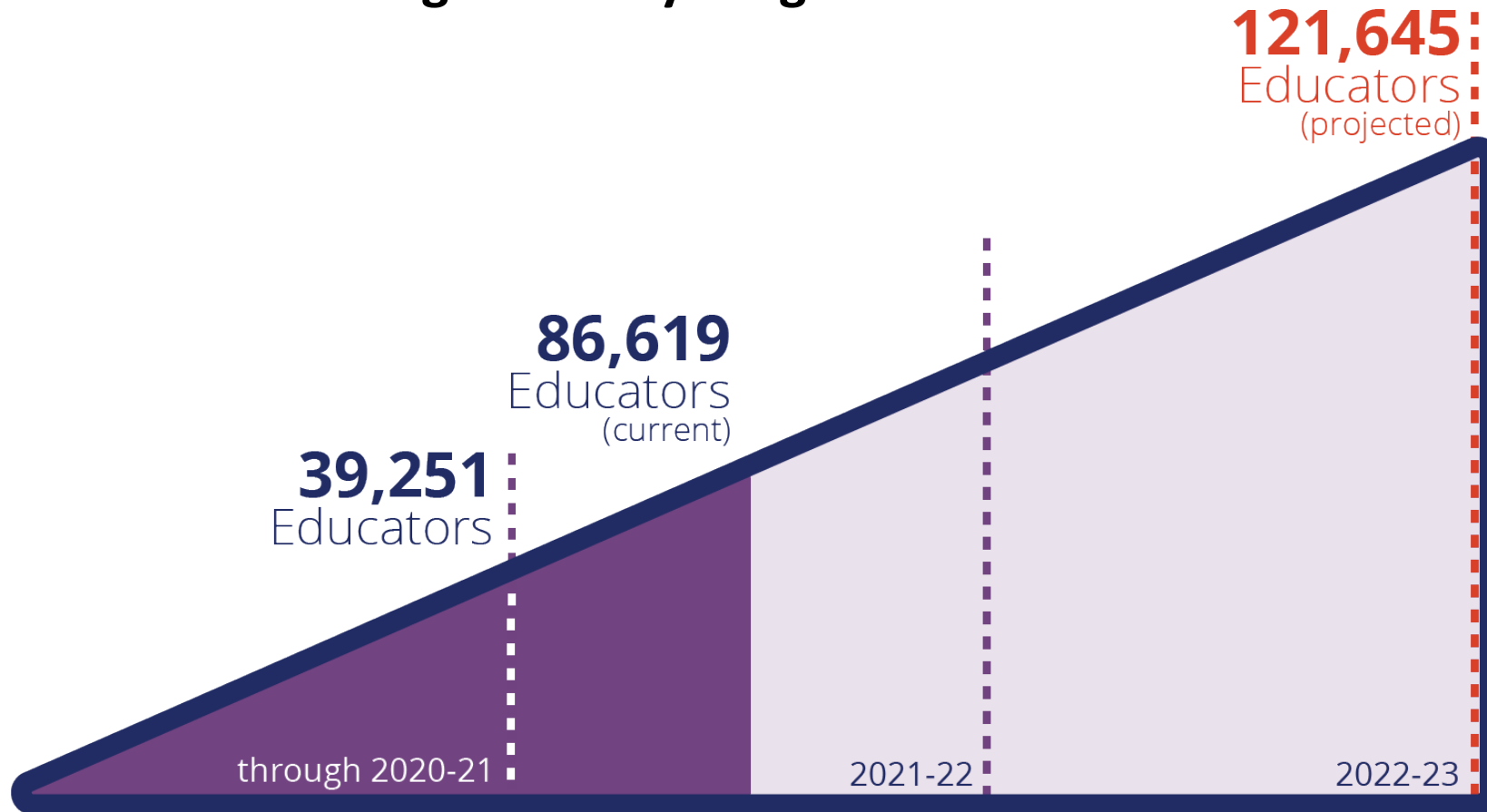
## With Reading Academies, Teachers Spend 12 Months Studying The Science of Teaching Reading




Scarborough, H. S. (2001). Connecting early language and literacy to later reading (dis)abilities: Evidence, theory, and practice. In S. Neuman & D. Dickinson (Eds.), Handbook for research in early literacy (pp. 97–110). New York, NY: Guilford Press.

# Reading Academies Will Support All Teachers in Texas

## Reading Academy Program Enrollment



All K-3 teachers & principals must complete reading academies by 2022-23.

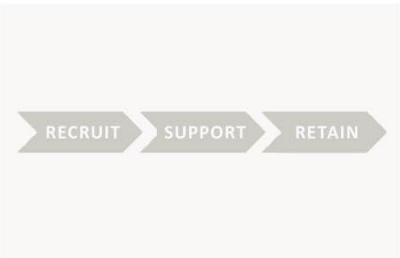


provides **\$800M per year** in early education allotment, primarily for prekindergarten & reading academies

# TEA Strategic Priorities

Every child, prepared for success in college, a career or the military.

Strategic priorities



Recruit, support and retain teachers and principals



Build a foundation of reading and math



Connect high school to career and college



Improve low-performing schools

Enablers



Increase transparency, fairness and rigor in district and campus academic and financial performance



Ensure compliance, effectively implement legislation and inform policymakers

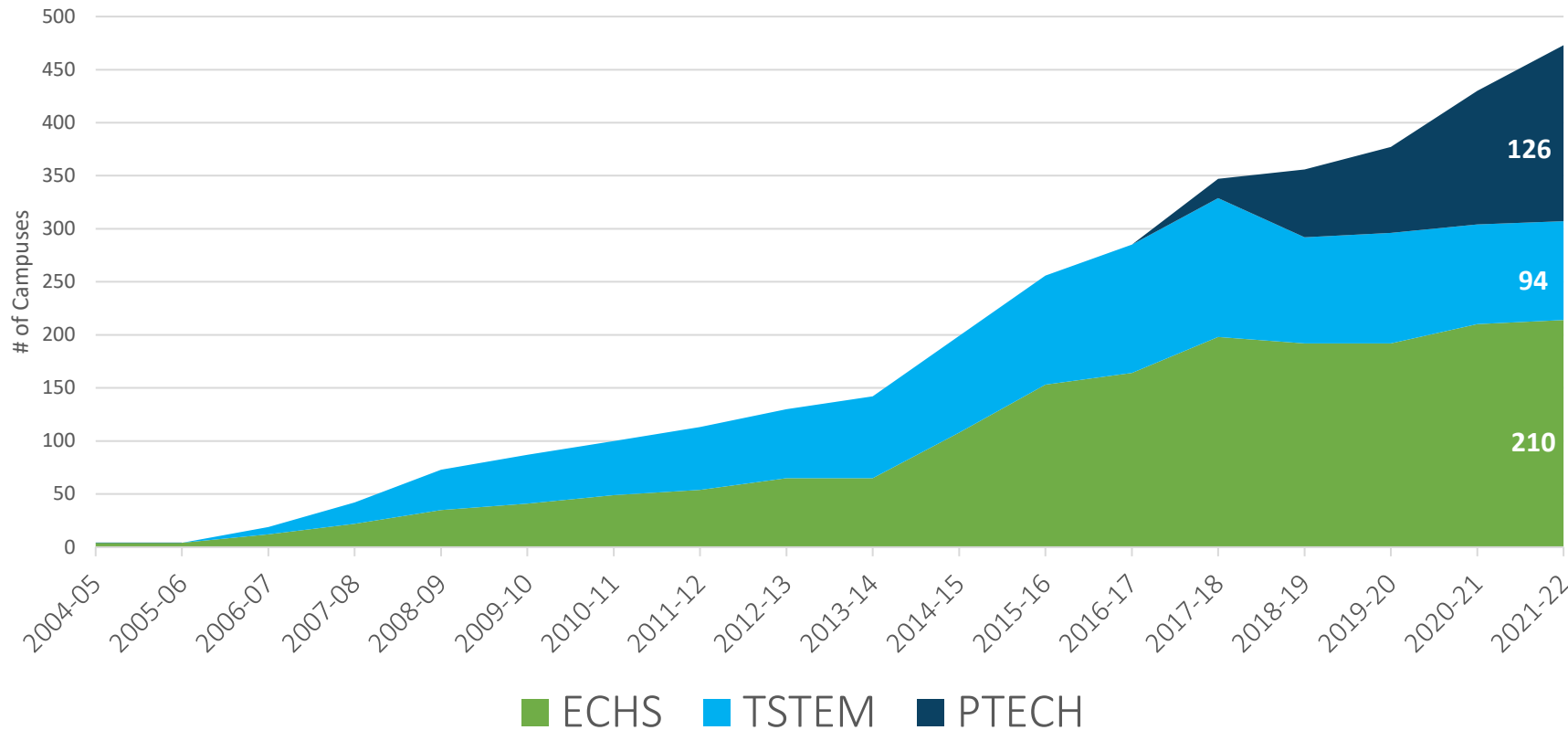


Strengthen organizational foundations (resource efficiency, culture, capabilities, partnerships)

# Increase In Texas Innovative Academies

TX Innovative Academies **28%** vs. **2%** Statewide Average

## Receive an Associate's Degree at Graduation



provides funds to launch **+ 69 new P-TECH** schools across Texas starting in 2022-23

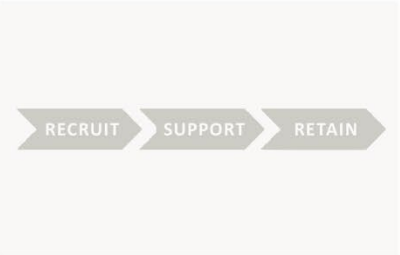


provides **\$50 per student** in extra funding per year for P-TECH Schools

# TEA Strategic Priorities

Every child, prepared for success in college, a career or the military.

Strategic priorities



Recruit, support and retain teachers and principals



Build a foundation of reading and math



Connect high school to career and college



Improve low-performing schools

Enablers



Increase transparency, fairness and rigor in district and campus academic and financial performance



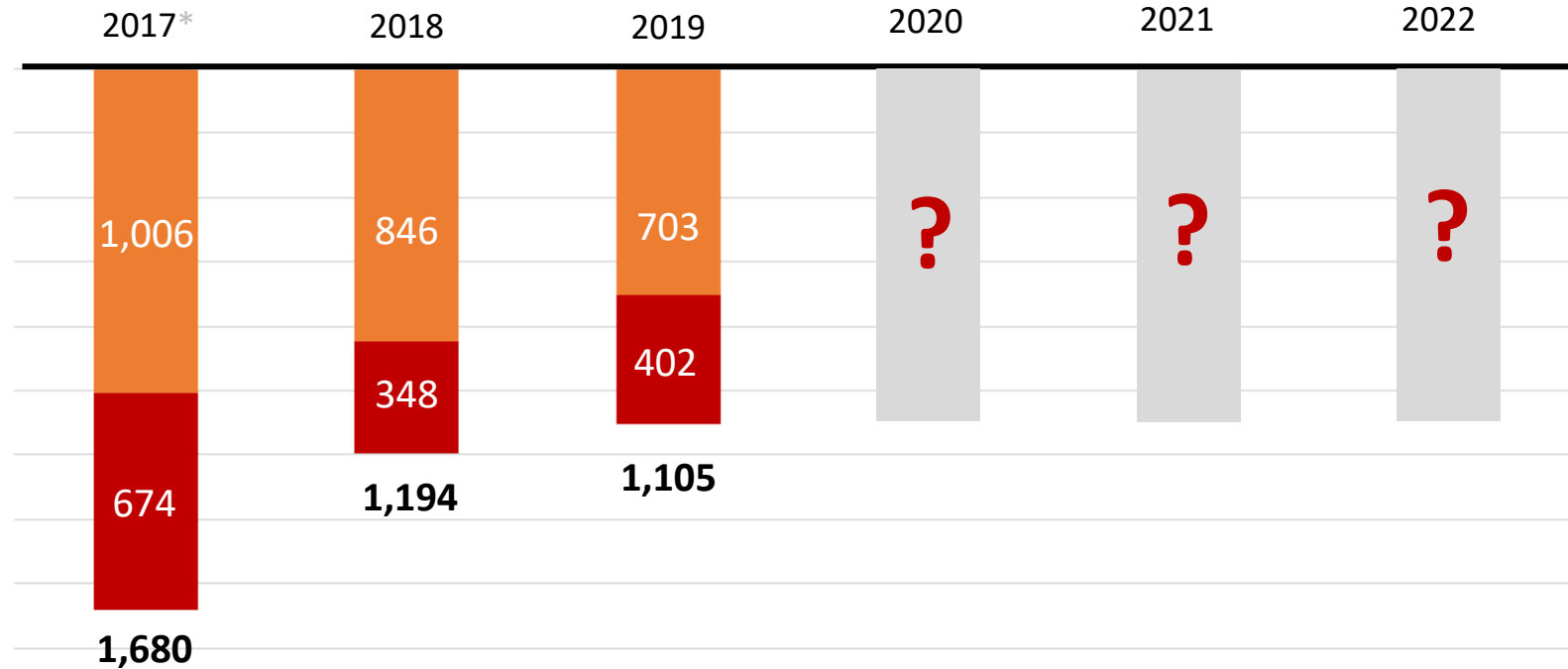
Ensure compliance, effectively implement legislation and inform policymakers



Strengthen organizational foundations (resource efficiency, culture, capabilities, partnerships)

# Before COVID, Performance was Improving

## D and F Campus Overall Ratings



**But the Accountability System Has Been Paused For 3 Full Years Due to COVID**



# Accountability Systems Help Students In School And In Life



**Monitoring performance with school ratings has been shown to have long term benefits for students:**

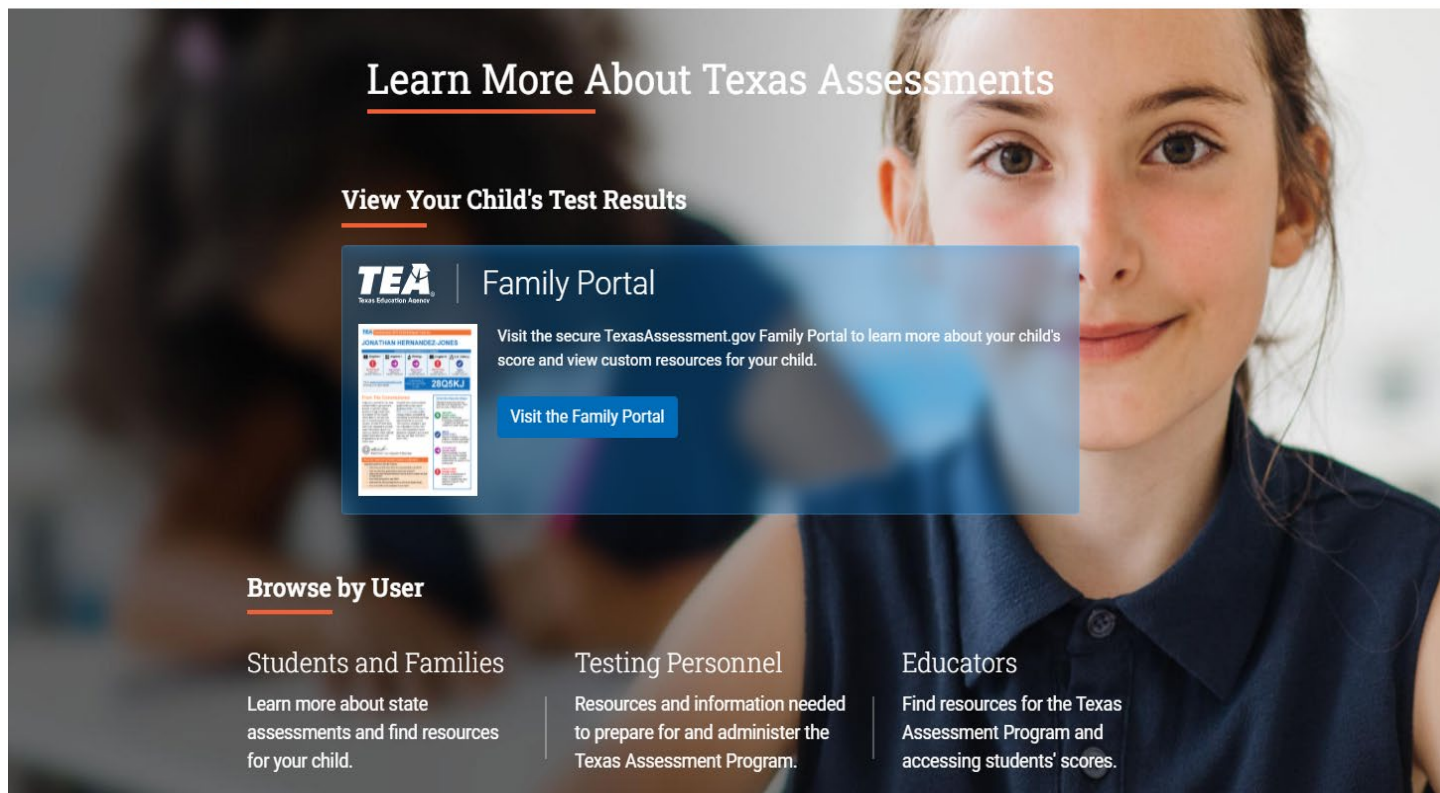
“Our analysis reveals that pressure on schools to avoid a low performance rating led low-scoring students to score significantly higher on a high-stakes math exam in 10th grade. These students were also more likely to accumulate significantly more math credits and to graduate from high school on time. *Later in life, they were more likely to attend and graduate from a four-year college, and they had higher earnings at age 25.*”

Source: <https://www.educationnext.org/when-does-accountability-work-texas-system/>

## TexasAssessment.gov



VISIT TXSCHOOLS.GOV



## Tools for Parents, At Your Fingertips.



**Access** detailed results for every STAAR test your child has taken while in school.



**Compare** how your child performed to other students at their campus and in their district.



**View** the questions your child got incorrect, along with the standard tested, so you can help them improve.



**Explore** resources tailored specifically to your child that you can use with them over the summer.

- Teacher supports, including recruiting, preparation, and retention supports
- Tier 1 / Core curricular improvement supports, including quality, transparency, teacher training, and linked assessments
- Accelerated learning supports & related acceleration tools
- Special education funding structure
- Virtual/hybrid learning structures
- Interplay between local & state share

MIDDLE SCHOOL

The challenge is mighty,  
but so are educators in Texas.